

# BONAMI

MANNEQUINS CRAFTED FOR FASHION



# BONAMI

Thank you for opening our catalogue. As a Belgian manufacturer, we would like to give you an overview of our different collections and finishes. Each collection can be sprayed in any colour and each collection consists of different attitudes. For questions on price and finishing, please contact us: [info@bonami.be](mailto:info@bonami.be)

## INDEX:

SUSTAINABLE COLLECTIONS	PG. 3
BUSTS	PG. 7
FEMALE COLLECTIONS	PG. 11
PLUS SIZE COLLECTIONS	PG. 48
MALE COLLECTIONS	PG. 51
SPORT COLLECTIONS	PG. 67
KIDS COLLECTIONS	PG. 68
DECO & ACCESSOIRES	PG. 69





100% recyclable  
Unbreakable  
Lightweight  
Magnetic system  
Sustainable production  
Easy dressing  
No more repair cost



# FUTURE SUSTAINABLE

COLLECTION

<https://www.bonami.be/raw-concrete>  
<https://www.bonami.be/m-raw-concrete>



100% recyclable  
Unbreakable  
Lightweight  
Magnetic system  
Sustainable production  
Easy dressing  
No more repair cost

# FUTURE SUSTAINABLE COLLECTION



<https://www.bonami.be/f-painted>  
<https://www.bonami.be/m-painted>



- 100% recyclable
- Unbreakable
- Lightweight
- Magnetic system
- Sustainable production
- Easy dressing
- No more repair cost

# FUTURE SUSTAINABLE

COLLECTION



<https://www.bonami.be/f-covered-with-fabric>  
<https://www.bonami.be/m-covered-with-fabric>



100% recyclable  
Unbreakable  
Lightweight  
Magnetic system  
Sustainable production  
Easy dressing  
No more repair cost

# FUTURE SUSTAINABLE

COLLECTION







# TAILOR BUSTS

COLLECTION



# BUSTS





# Family BUST COLLECTION

<https://www.bonami.be/family>

# HIGH SIMPLICITY COLLECTION







# SIMPLICITY

COLLECTION



# TAILOR BASICS

COLLECTION



<https://www.bonami.be/tailor-basics-male>  
<https://www.bonami.be/tailor-bascis-female>





# FASHION QUEENS

DETACHABLE SHOES COLLECTION



<https://www.bonami.be/fashion-queens-shoes>



FASHION QUEENS  
PHANTASY COLLECTION





# FASHION QUEENS

NEUTRAL FEET COLLECTION



<https://www.bonami.be/fashion-queens>



# FASHION QUEEN CLASSIC

COLLECTION





# STARS ABSTRACT

IRA5 COLLECTION

<https://www.bonami.be/stars-abstract>



# STARS II

ABSTRACT SHEF COLLECTION

<https://www.bonami.be/stars-abstract>





# STARS

REALISTIC COLLECTION



# AFFINITY

COLLECTION





# OMNIA ABSTRACT

COLLECTION

The image is a fashion advertisement for the 'OMNIA REALISTIC COLLECTION'. It features three mannequins against a dark, moody background. The mannequin in the foreground is shown in profile, wearing a dark green ribbed knit beanie, a matching turtleneck sweater, and a grey plaid jacket. A dark green bag is visible on her shoulder. The middle mannequin is slightly behind and to the left, wearing a similar green top and a grey plaid jacket with a large green bow at the neck. The background mannequin is further back and out of focus, wearing a dark green coat. The text 'OMNIA' is written in large, white, thin-lined capital letters across the center, with 'REALISTIC COLLECTION' in smaller, white, thin-lined capital letters below it.

OMNIA  
REALISTIC COLLECTION



# FAMILY

## COLLECTION



# HIGH SIMPLICITY COLLECTION







# FASHIONWISE

COLLECTION



# STYLECATS

COLLECTION

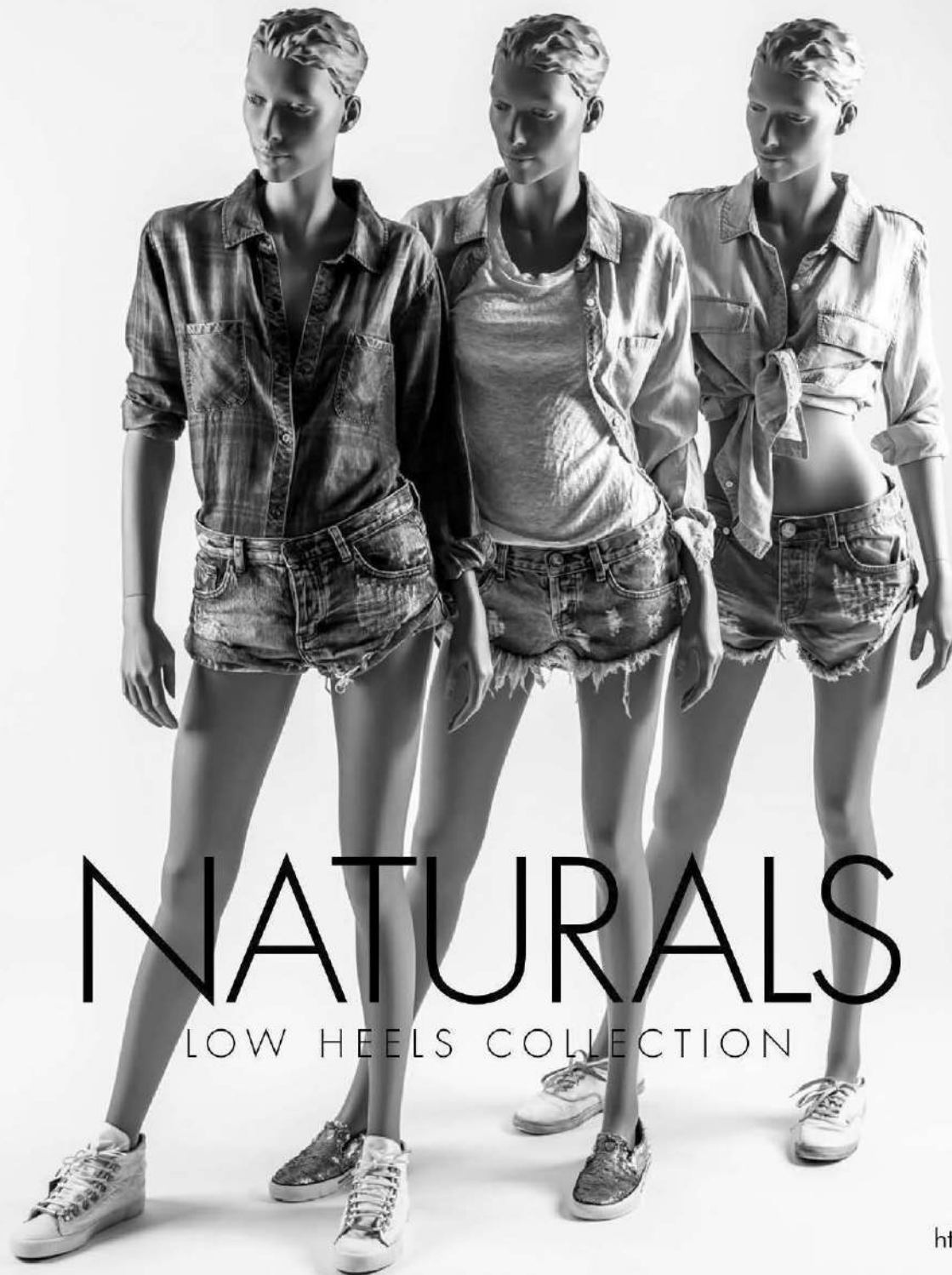




# GLAMAGA

COLLECTION

<https://www.bonami.be/glamaga>



# NATURALS

LOW HEELS COLLECTION

<https://www.bonami.be/naturals-low-heels>



# NATURALS

HIGH HEELS COLLECTION





# HARMONY

COLLECTION





# GLAMAZONE

COLLECTION



# FEMIA

HIGH HEEL COLLECTION







# STYLECATS LS

COLLECTION



# STYLECATS LS

REALISTIC COLLECTION

<https://www.bonami.be/hio>



# OCULTO

COLLECTION





# LASAI

COLLECTION

<https://www.bonami.be/fas>





# VOYAGE

COLLECTION

<https://www.bonami.be/voyage>

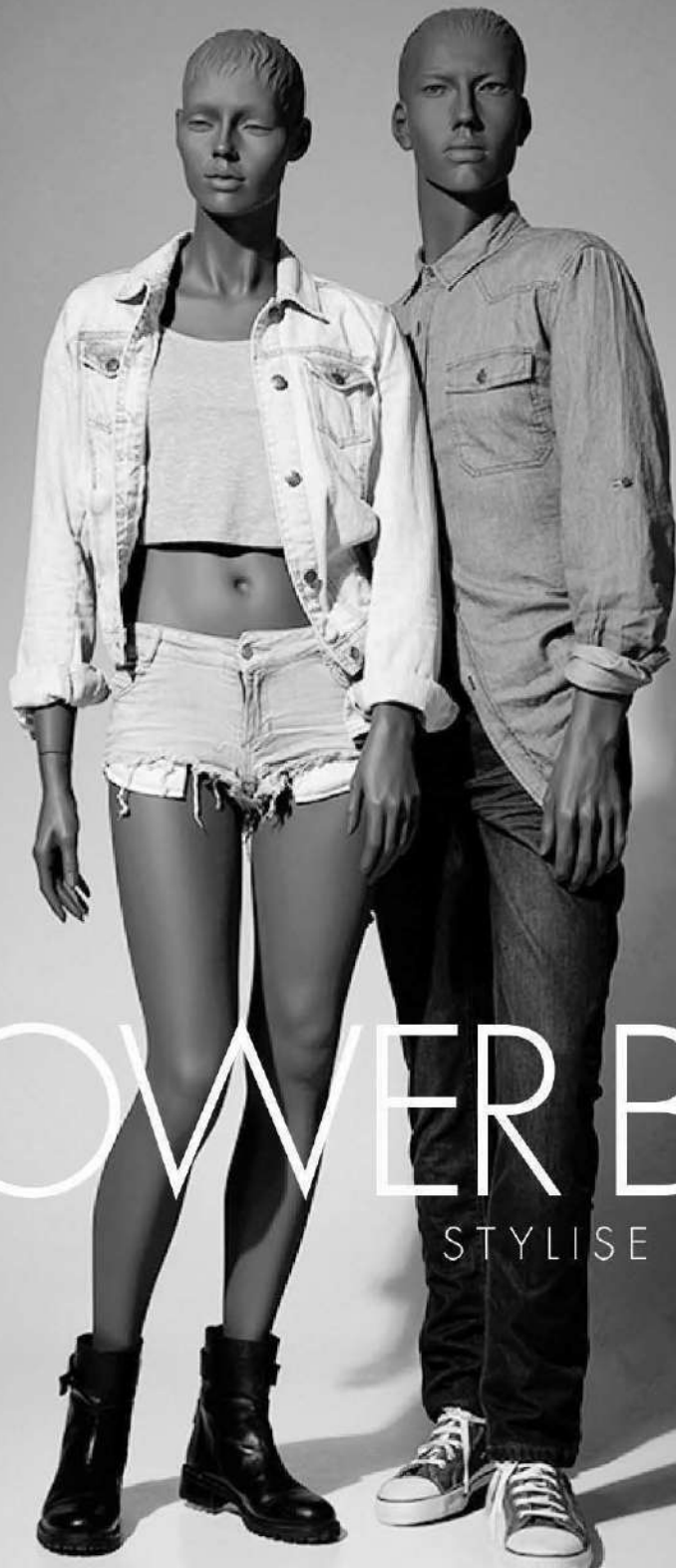


# VANITY LINGERIE

COLLECTION

<https://www.bonami.be/vanity>





# POWER BOY&GIRLS

STYLISE COLLECTION

<https://www.bonami.be/power-girls>  
<https://www.bonami.be/power-boy>

BONAMI

LOVE  
LINGERIE  
COLLECTION



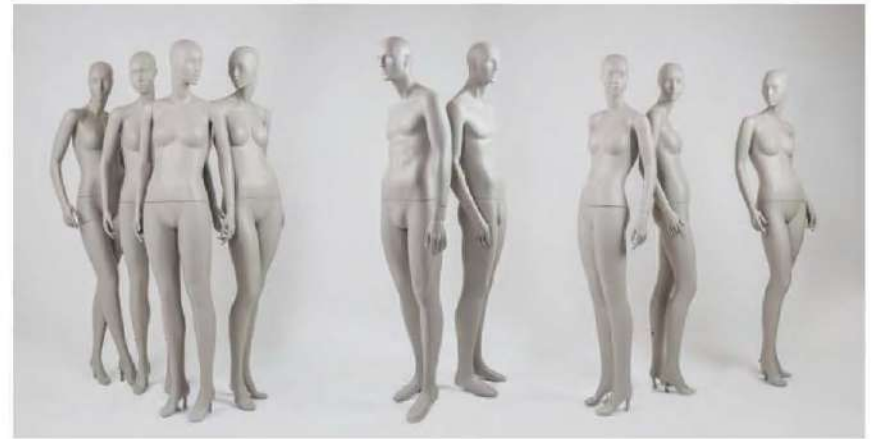
<https://www.bonami.be/naughties>





# SIMPURITY

COLLECTION



# STUDIO

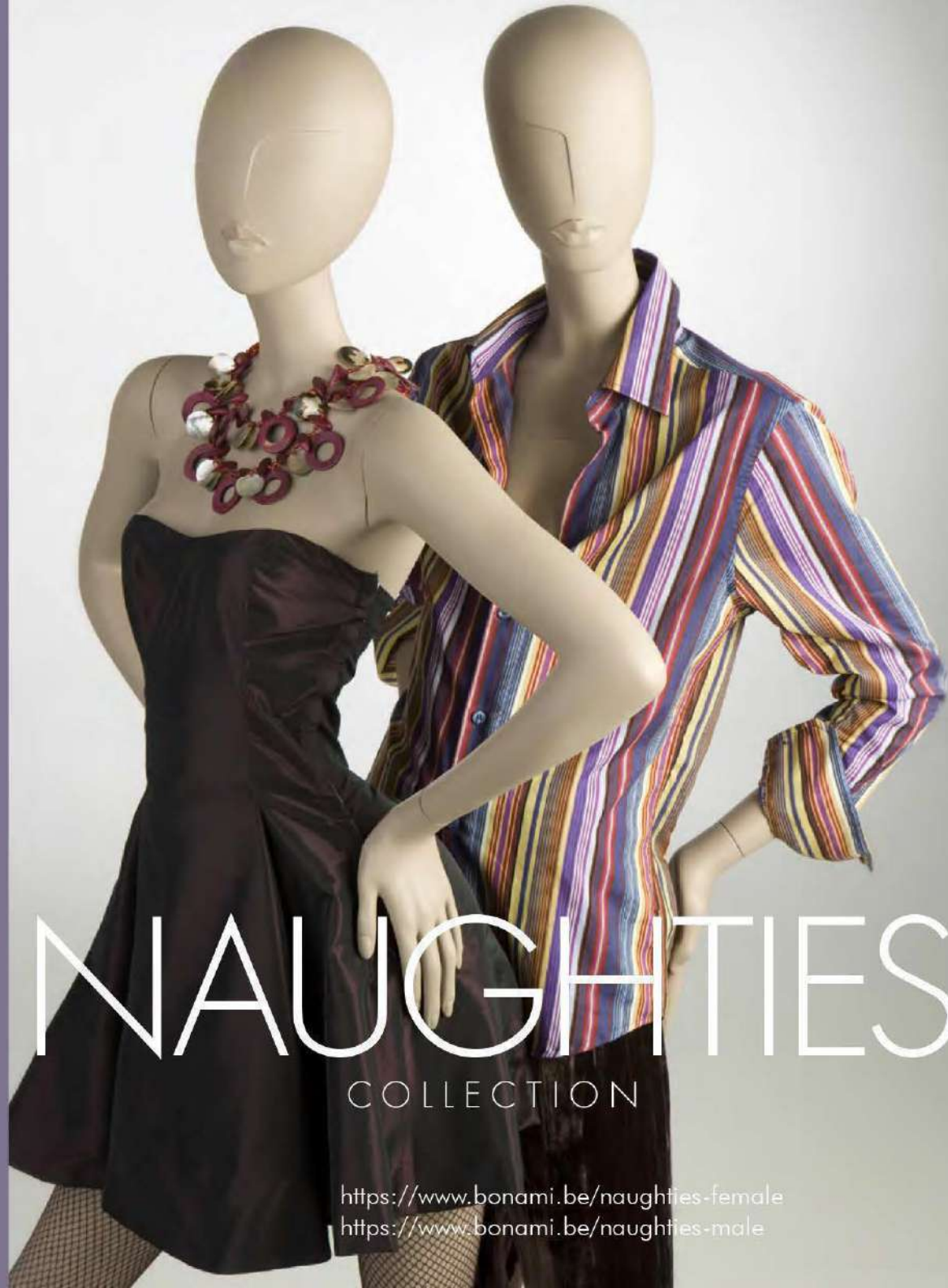
COLLECTION



# Y O U T H

COLLECTION





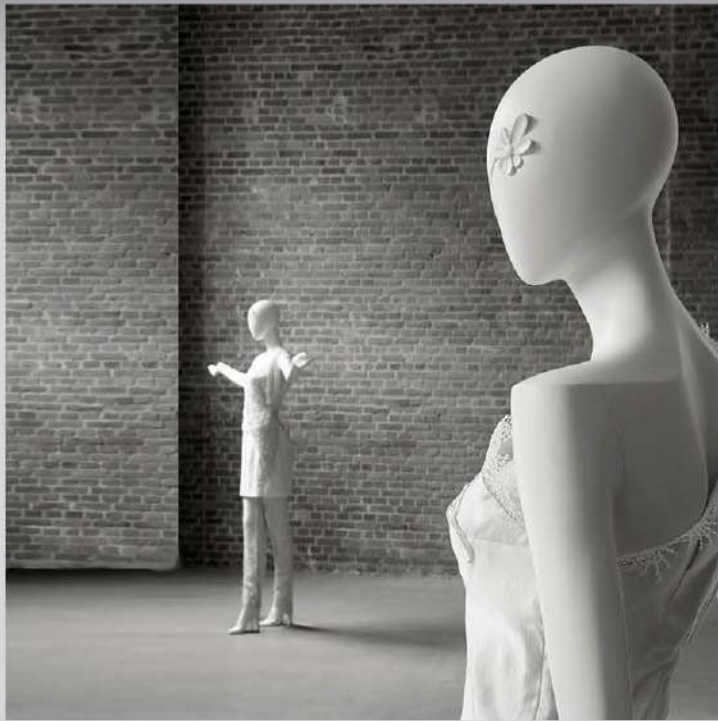
# NAUGHTIES

COLLECTION

<https://www.bonami.be/naughties-female>

<https://www.bonami.be/naughties-male>





# SHIKI

## COLLECTION



# DANCING QUEENS

COLLECTION

<https://www.bonami.be/dancing-queens>





# COLLECTIONS COVERED WITH FABRIC



# SHIKI PLUS

COLLECTION

<https://www.bonami.be/shiki-plus>





# GLAMAGA PLUS

COLLECTION



# ERIN

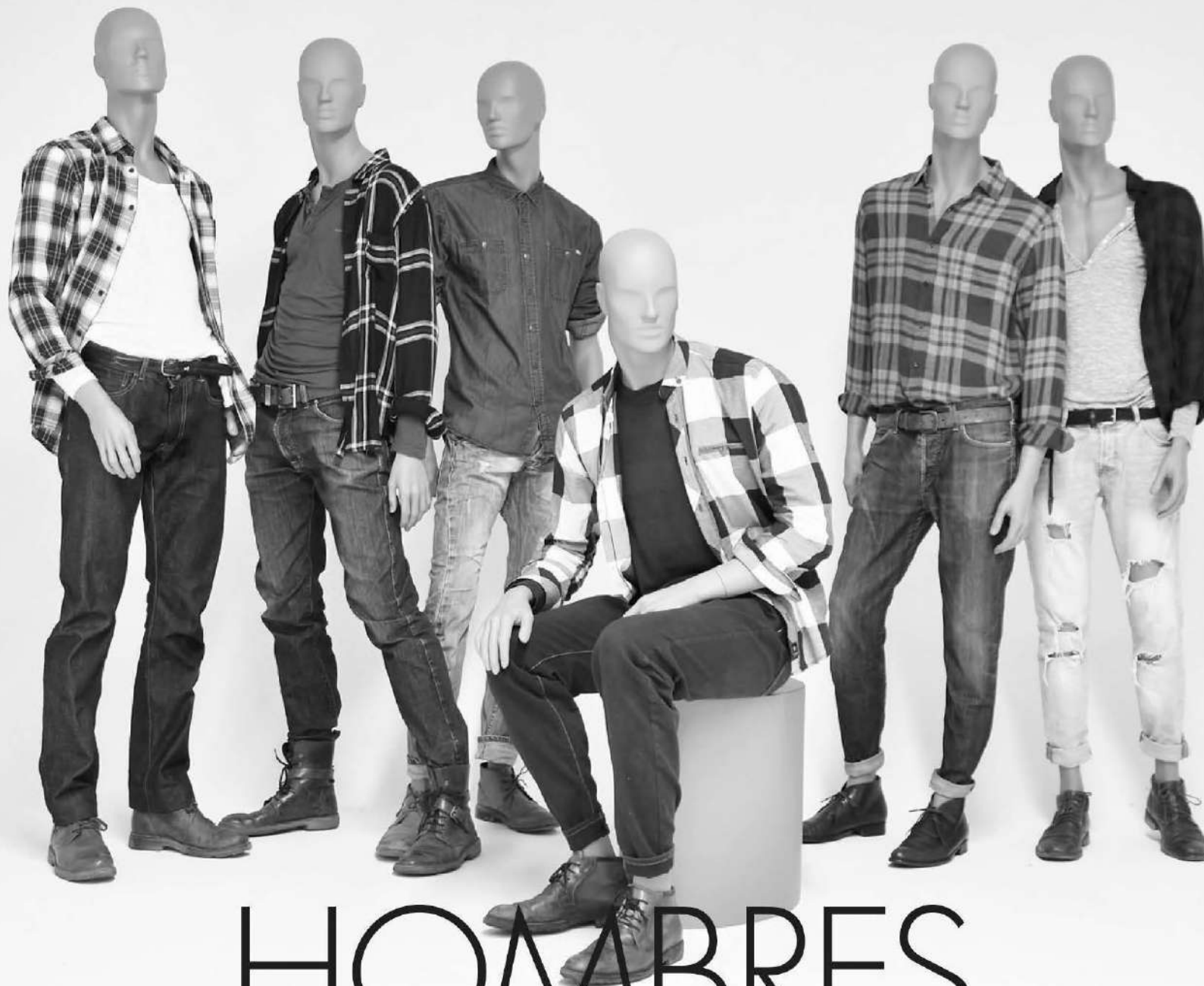
COLLECTION





# FASHION KINGS

COLLECTION



# HOMBRES

COLLECTION

<https://www.bonami.be/hombres>





# AFFINITY MALE

COLLECTION



# COLLECTIONS COVERED WITH FABRIC



# TAILOR BASICS

COLLECTION



<https://www.bonami.be/tailor-basics-male>  
<https://www.bonami.be/tailor-bascis-female>



# SIMPLICITY

COLLECTION



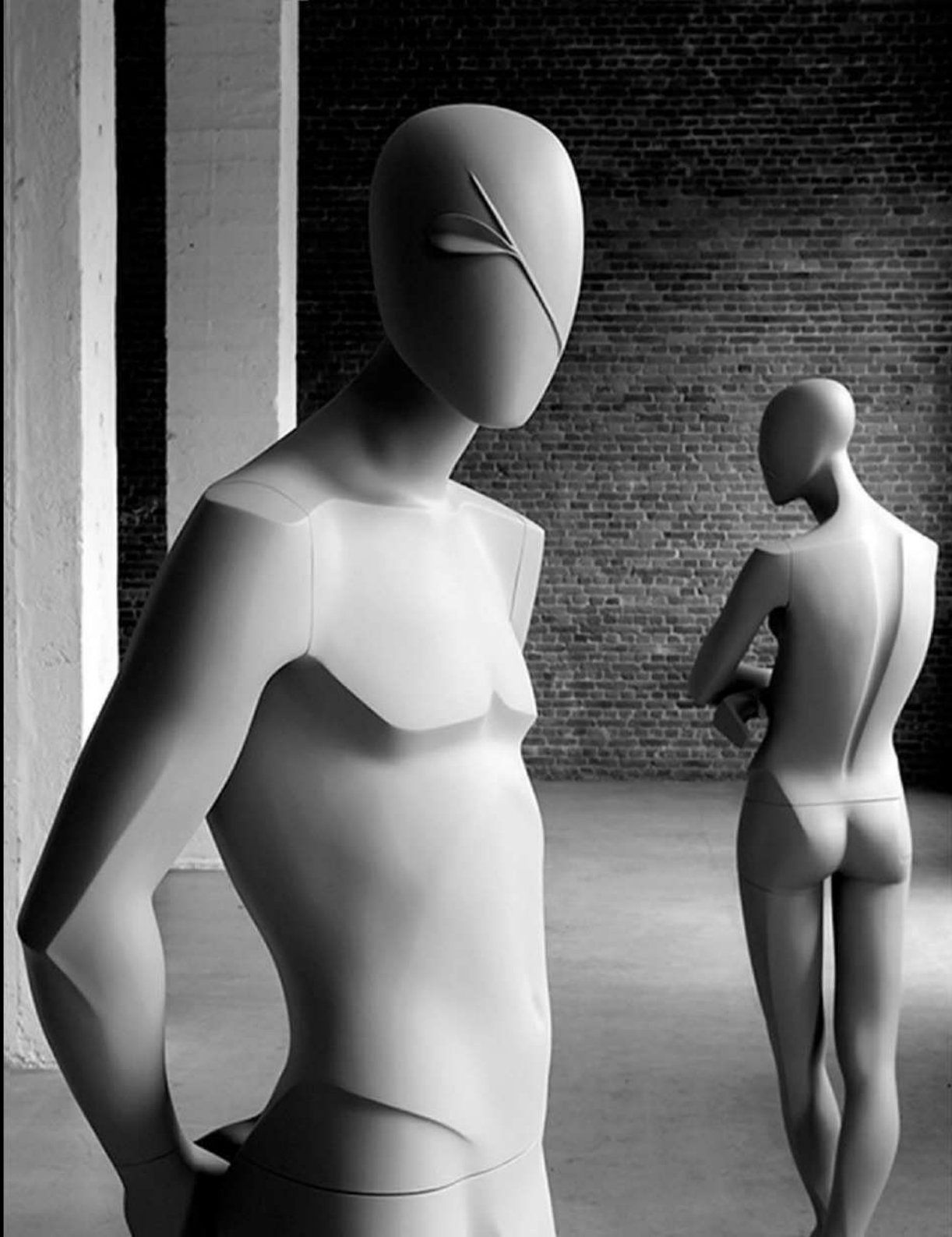
<https://www.bonami.be/simpurity>





# LASAI MALE

COLLECTION



# SHIKI

## COLLECTION

<https://www.bonami.be/shiki-male>





# GLAMAGA MALE

COLLECTION

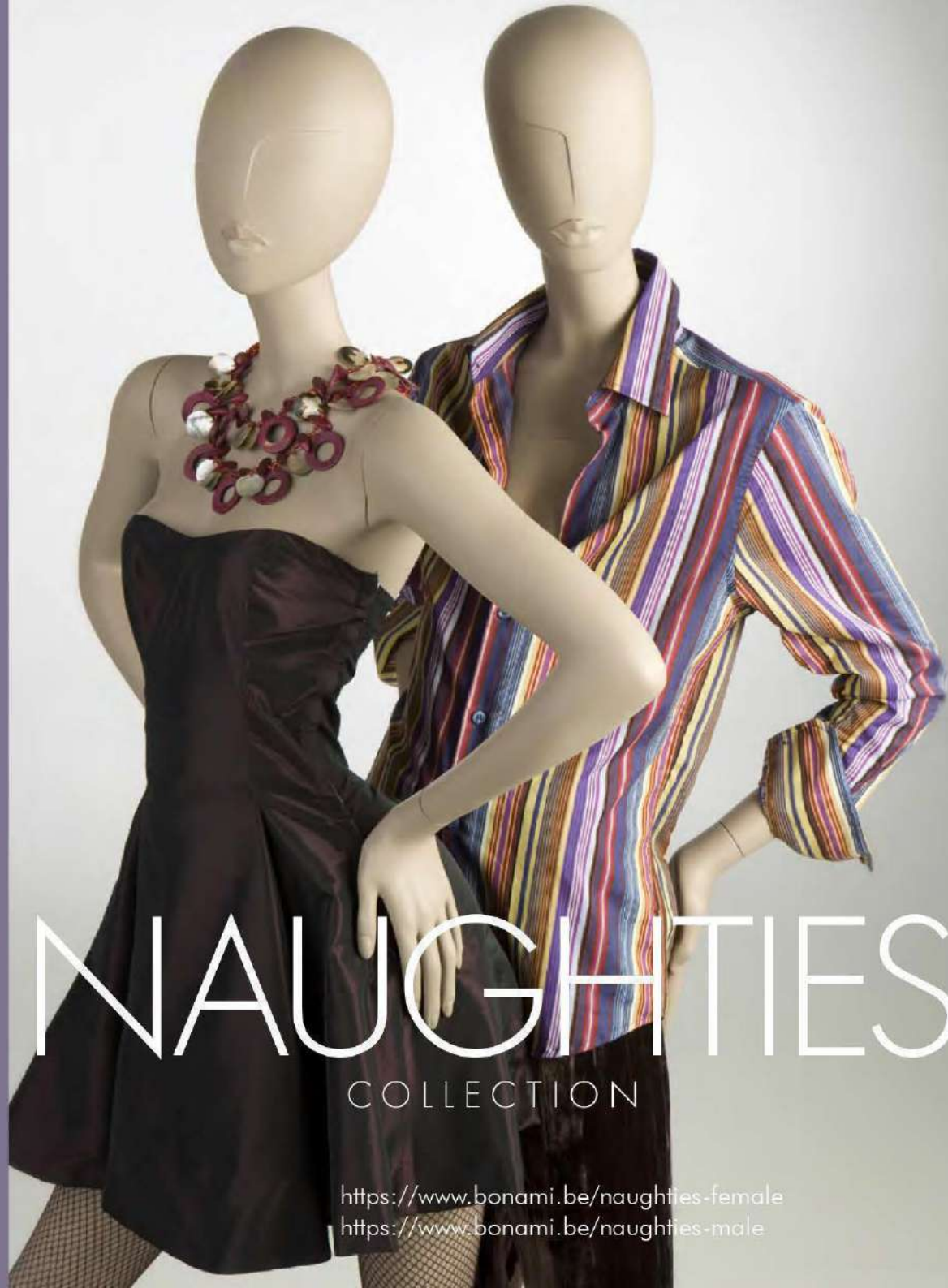


# HOMBRES

REALISTIC COLLECTION

<https://www.bonami.be/hombres>



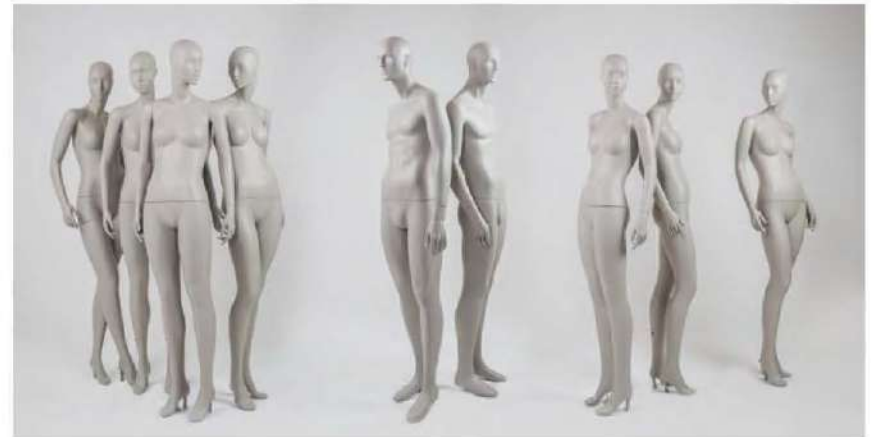


# NAUGHTIES

COLLECTION

<https://www.bonami.be/naughties-female>

<https://www.bonami.be/naughties-male>



# STUDIO

COLLECTION



# BONAMI



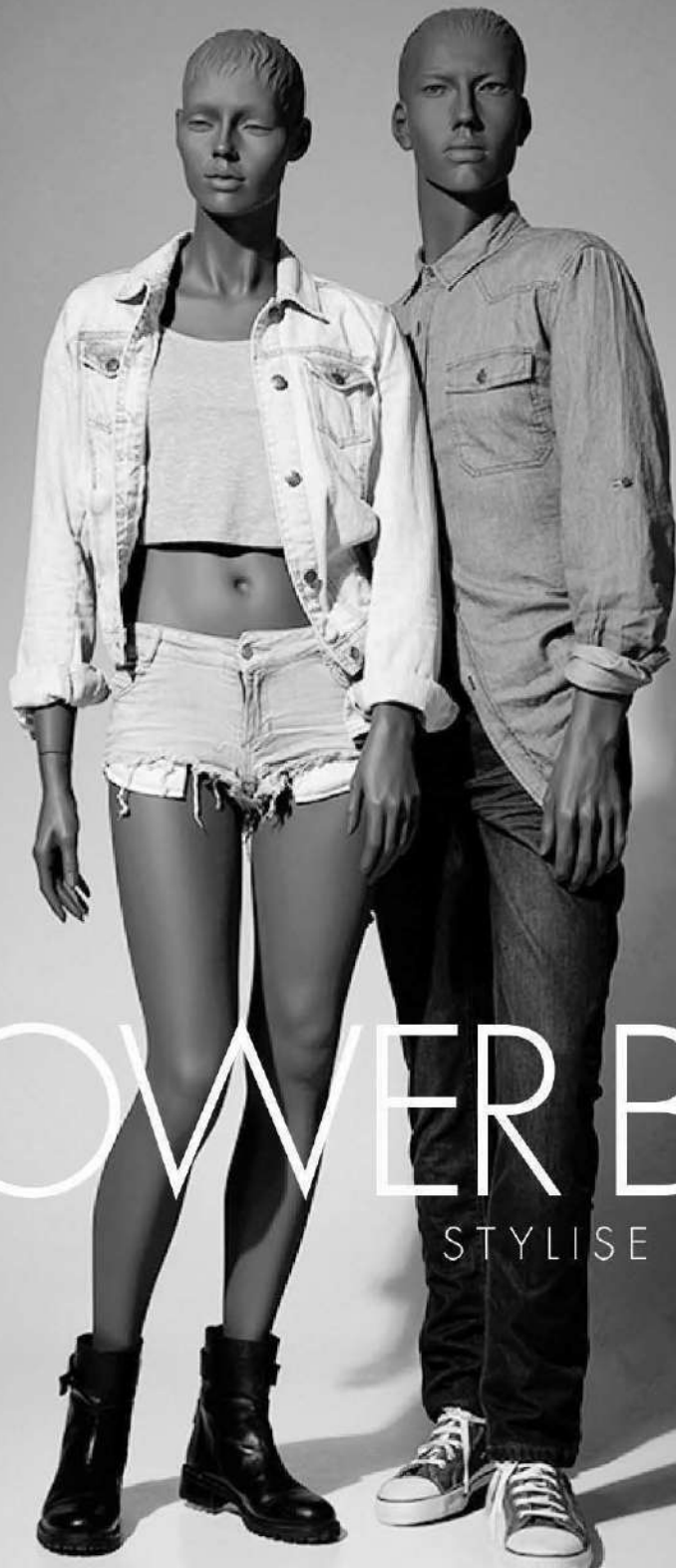
## FAMILY COLLECTION



# HIGH SIMPLICITY COLLECTION







# POWER BOY&GIRLS

STYLISE COLLECTION

<https://www.bonami.be/power-girls>  
<https://www.bonami.be/power-boy>

# OCULTO

COLLECTION







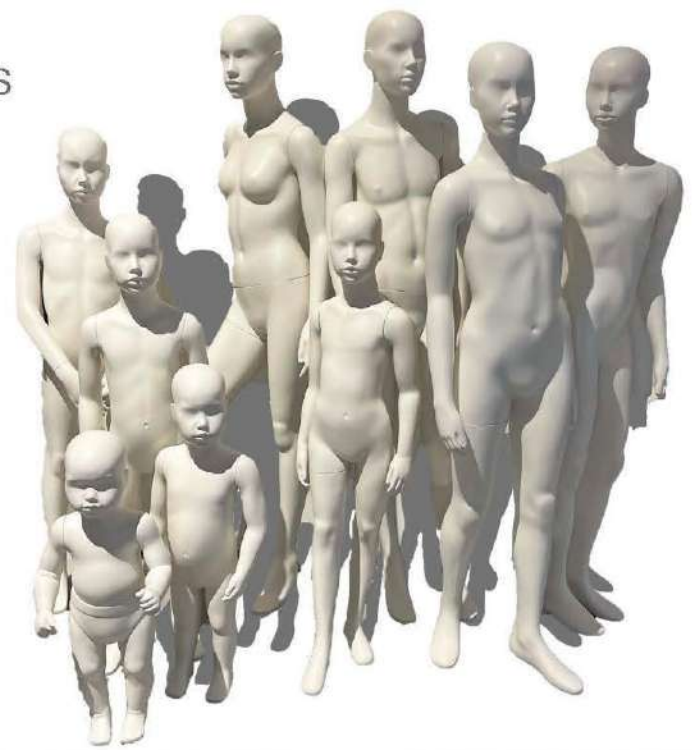
# SPORTS

COLLECTION

SIMPLICITY KIDS



UNIQUE KIDS



SHIKI KIDS



GLAMAGA KIDS



# KIDS

COLLECTIONS

SIMPURITY KIDS

OMNIA KIDS





# DECO

BY BONAMI

<https://www.bonami.be/deco>





*Feel free to contact us.*

# BONAMI

MANNEQUINS CRAFTED FOR FASHION

Léon Bekaertlaan 26, 9880 Aalter

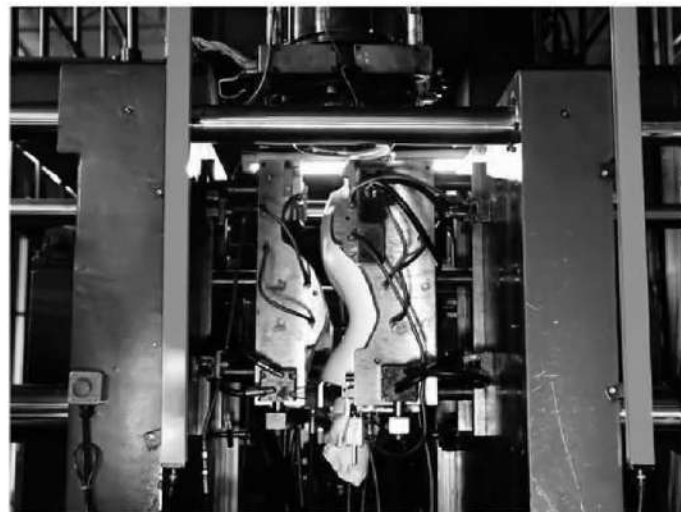
BELGIUM

T +32 9 325 05 13

[info@bonami.be](mailto:info@bonami.be)

[bonami.be](http://bonami.be)





**BONAMI**  
MANNEQUINS CRAFTED FOR FASHION